

South West area LAC

Parks and Countryside Service

Land area managed 3,934 Hectares

Sites of varying types managed across the city

- City Parks – 13
- District Parks – 20
- Local Parks – 50
- Botanical Gardens – 1
- Local Green Spaces – 342
- Playgrounds – 150
- Nature Conservation Sites – 262
- Woodlands / plantations – 181
- Community Farms
- Allotment Sites – 76
- Closed Burial Grounds – 21

Sports facilities include

- 15 cricket squares
- 4 cricket practice nets
- 140 football pitches
- 48 MUGAs
- 55 tennis courts
- 12 climbing boulders
- 21 bike tracks
- 11 skate parks
- 32 Bowls greens
- 14 Fishing sites
- 1 Pitch n Putt course

Other facilities include

- Boating facility
- By May2023, 14 sites with cafes, kiosks & toilets and more are planned.
- 3 Visitor & Education Centres
- 722 dual waste bins, 144 dog bins



Budget

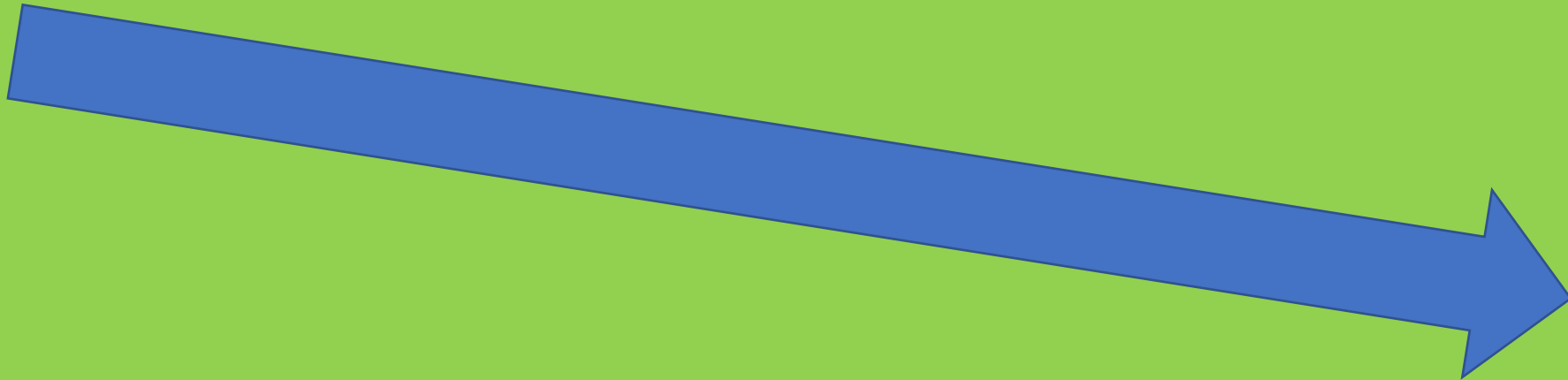
Revenue Funding

2010/11
£8.5m

2018/19
£4.9m

2022/23
£ 3.75m

2023/24
£3.35m



Income
Generation

£5.96m

£7.22m





The affordable management challenge

ASB, floral expectations, facilities management, popularity, diseases (e.g. Ash Die Back), staff & machinery, costly operations, fly tipping)



South West LAC Area Quality & Quality uplift

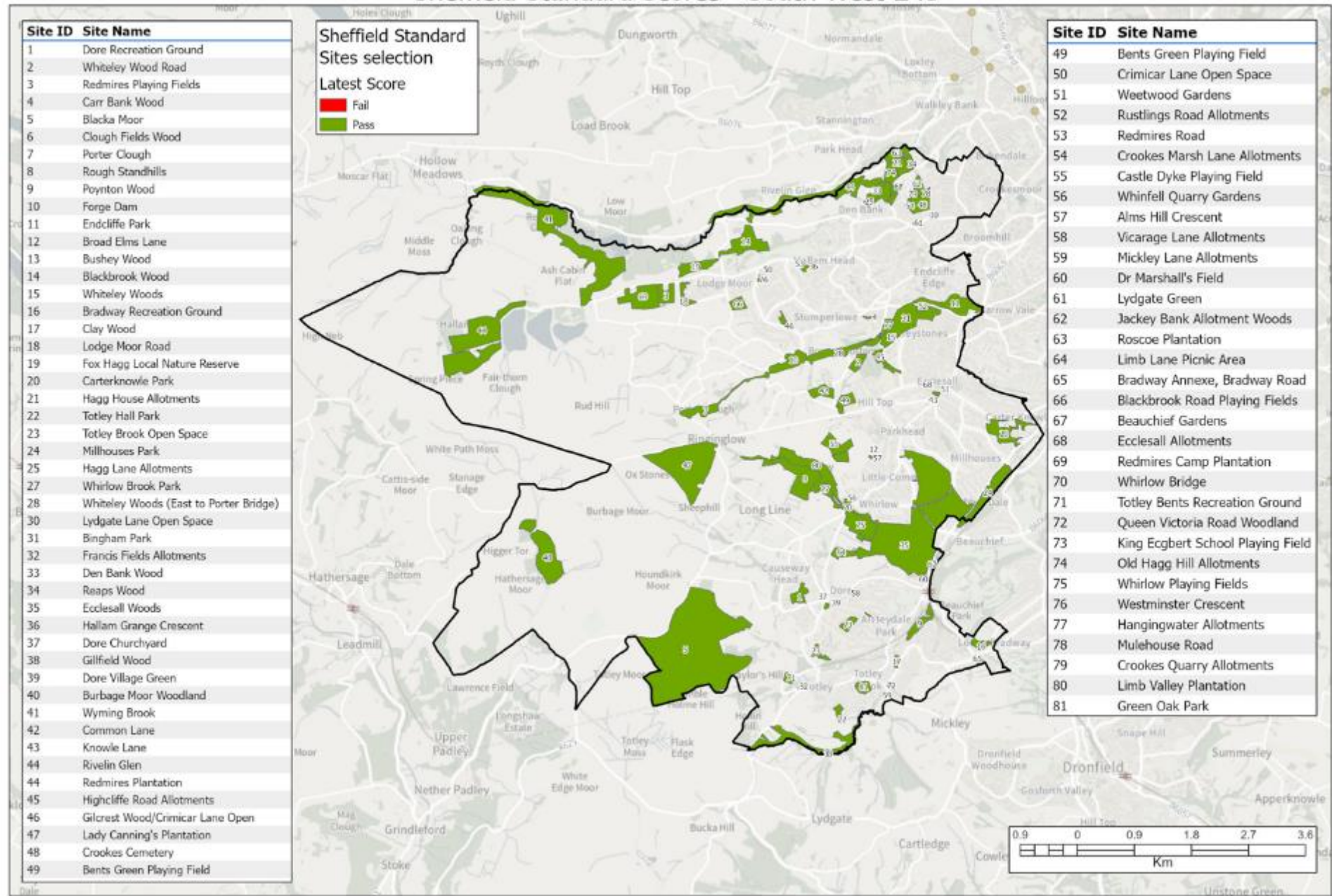
Quality position

- 81 recreational sites
- 100% attain the Sheffield Standard
- Green Flag: Millhouses Park, Ecclesall Woods,

Sites with plans for improvement:

- Forge Dam
- Carterknowle Park
- Millhouses Park
- Redmires Playing Field
- Bingham Park
- Poynton Woods
- Green Oak Park
- Dore Recreation Ground
- Totley Bents
- Bradway Playground

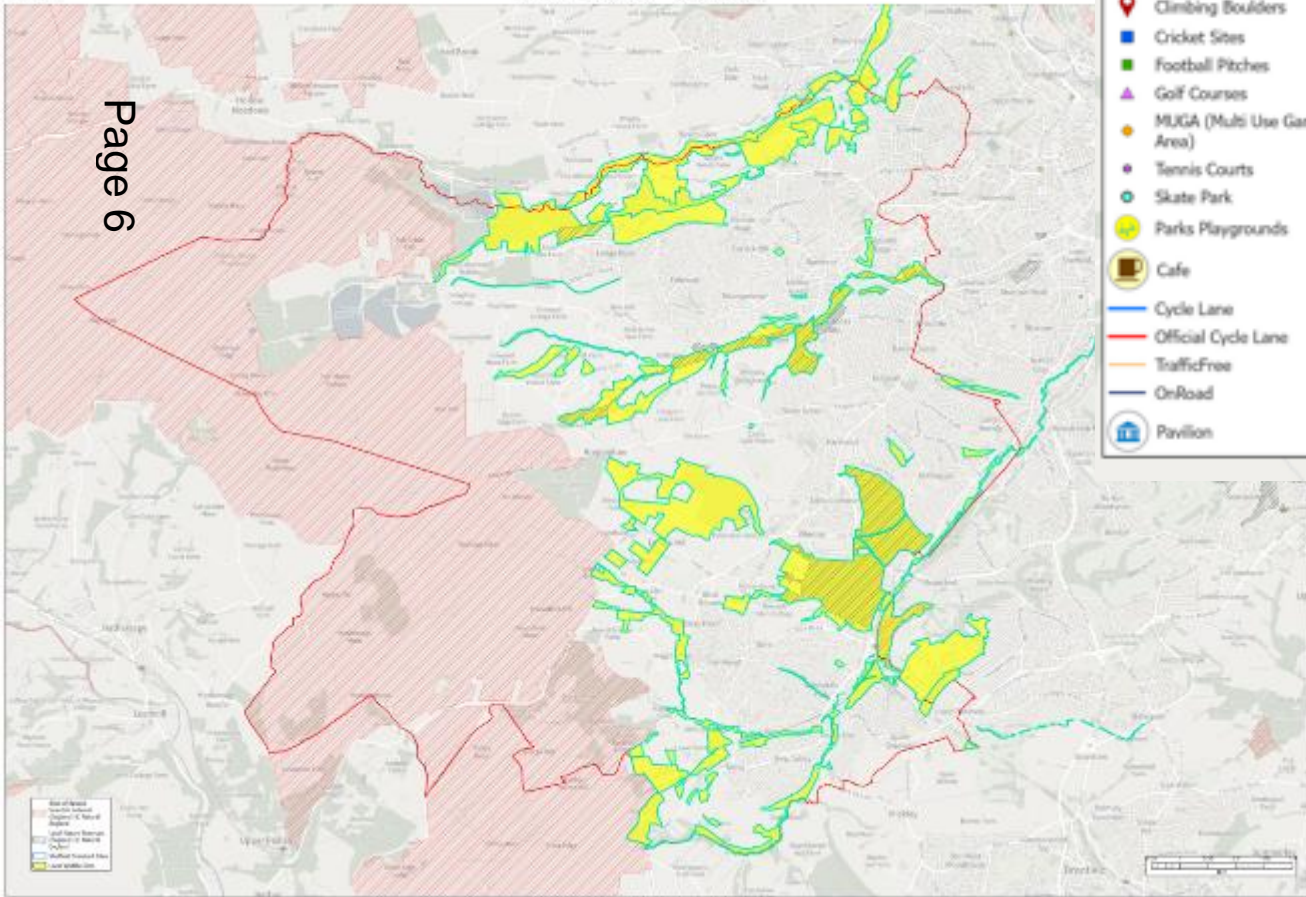
Sheffield Standard Scores - South West LAC



Ecological rich spaces

- Sheffield Standard Sites
- Local Wildlife Sites
- Sites of Special Scientific Interest (England) © Natural England
- Local Nature Reserves (England) © Natural England

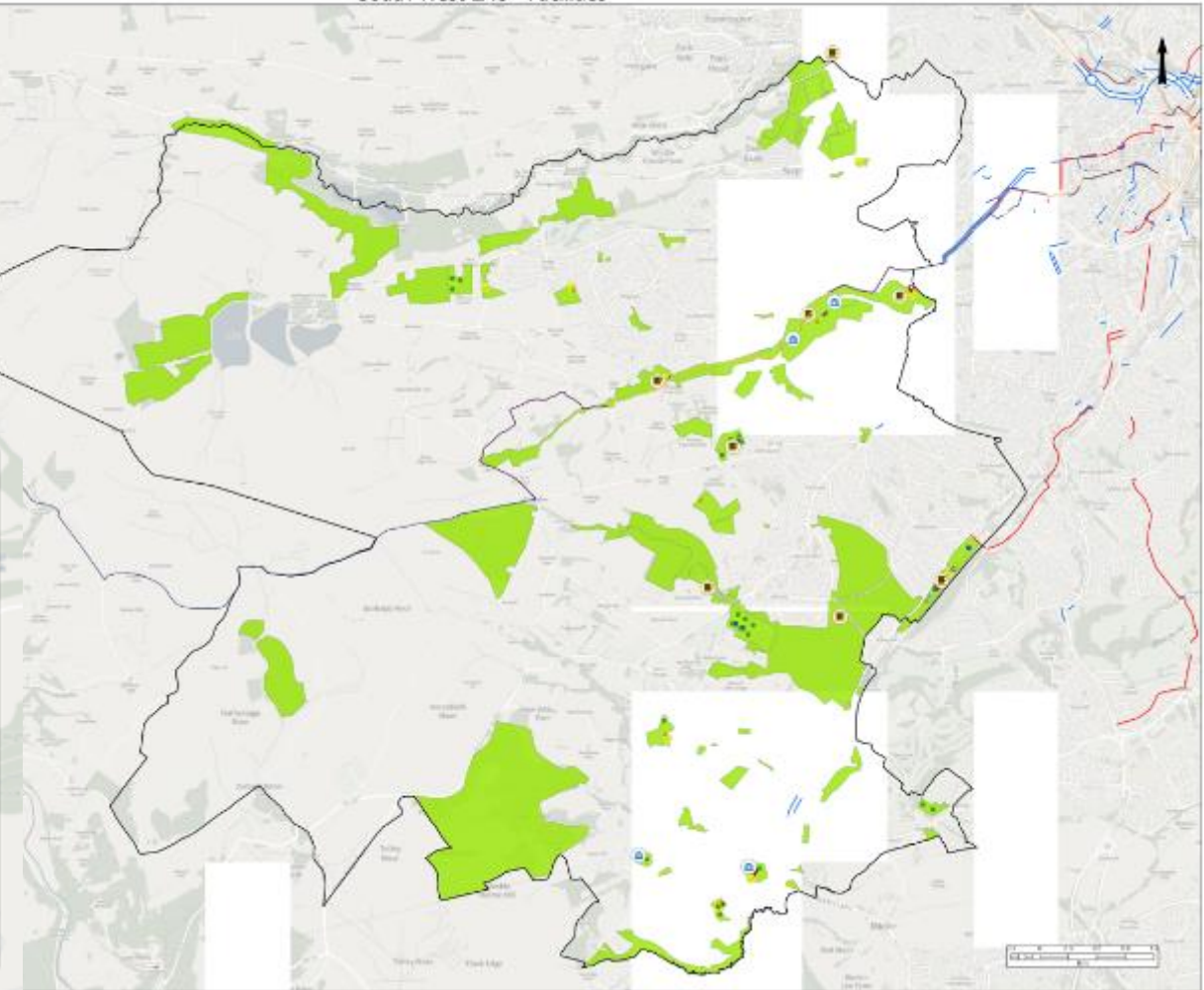
South West LAC - Biodiversity



Page 6

South West LAC - Facilities

- Bike Track
- Bowling Greens
- Climbing Boulders
- Cricket Sites
- Football Pitches
- Golf Courses
- MUGA (Multi Use Games Area)
- Tennis Courts
- Skate Park
- Parks Playgrounds
- Cafe
- Cycle Lane
- Official Cycle Lane
- TrafficFree
- OnRoad
- Pavilion



Recreational Facilities

Recent Green Space Improvements

Carterknowle Park ponds



Page 7

Dore Rec – playground improvements



Millhouses Park – accessible play



Bingham Park
new basketball





Forge Dam project



Beaver project - working with SRWT as well as other partners - Blackamoor is one of the confirmed feasibility locations. There will be a wide ranging stakeholder engagement exercise and no guarantee that any sites get approved.

Credit: Devon Wildlife Trust

Limb Brook Natural Flood Management Pilot

- Completion of the Environment Agency funded Pilot – delivered by SRWT, in partnership with SCC and the EA
- Now in long term management of SCC
- Swales, ponds and leaky dams installed from Lady Cannings through Ecclesall woods
- SHU involved in monitoring and evidence gathering



Rangers

- Great work with Friends of Brincliffe Edge, Gillfield Wood, Whirlow Brook Park, Friends fo Ecclesall Woods – THANK YOU
- Partnering with CPRE Hedgelaying at Haythornthwaite Wood
- Fine tuning the leaky dams at Porter Clough and storm clear up
- Christmas is in full swing at Ecclesall Woods – Shop open, Christmas Trees for sale, wreath making classes





Page 12



Business and Partnerships

- Managing the Commercial Lettings Portfolio
- Developing Partnerships
- Increasing income into the Service to reduce cuts
- Managing encroachments, adoptions and all lease/licensing requirements



- City-wide Café facilities 2018 = £100K of income. Forecast of £300K for 2023/24
- Fitness and Education activities income of c £20K
- Mobile Catering c £25k

The Shelter Café – Whirlow Brook Park

- Opened Summer 2023
- Private investment into the Park
- Friends of the Park Group involvement and support



Page 14

- Improved road safety including signage and traffic calming
- Accessible toilets – for all Park users
- Prior to investment – untidy buildings, future liability to SCC
- Quality facility offering good locally sourced food



Volunteering P&C led activities

April – September 2023

- Engaged with 410 volunteers
- Total volunteering hours 1305

Across various sites including:

- Ecclesall Woods
- Gilcrest Wood
- Gillfield Wood
- Green Oak Park
- Lady Cannings
- Limb Valley
- Porter Valley
- Redmires
- Sheffield Botanical Gardens
- Whirlow Playing Fields

Activities undertaken:

- clearance and cutting back
- path maintenance
- tree maintenance mulching
- bench, fence, gate installations and repair
- support at events
- education sessions
- meadow management



Allotments in the South West

- Total plots in the South West 991
- There are 60 unlettable plots (mostly green clearance required or trees from woodland encroachment that would require significant clearance)
- Total waiting list in the SW 731

Allotment works

- **Highcliffe:**
 - Urgent path work to undertake, damaged by recent rainfall.
 - Couple of new beds for the starter plots on plot 32
 - working with the society to make the lower car park into more of a better surface for cars to park.
- **Roscoe Planation.** Planning to add another gate to improve security + quote in for drainage/footpath work. Container to be installed on a communal plot.
- **Hagg House society are developing 2 Starter Plots.** Gets people on the waiting list involved in allotment life.
- We would like to undertake more plot clearance and find more areas for new allotments.



South East LAC Green Spaces – future projects and priorities

Green Space Improvements in planning

Future Priorities:

- **Improving site quality** – Sheffield Standard & Green Flag
- **Recreational & Community Facilities renewal:** This will include play enhancements at such as Dore Rec, Totley Hall Recreation Ground, Green Oak Park and Bradway Playground.
- **Making sites more accessible and Inclusive** – as part of playgrounds renewal – choice of inclusive equipment.
- **Sustainable delivery** – income generation opportunities that link with quality sites and services.
- **Making sites better for wildlife by improving natural habitats (woodlands, wildflower meadows, Natural Flood Management etc.)** - Habitat and accessibility improvements at naturalistic spaces across the South West



Improving the accessibility of play



Trial autumn cut meadow strips

Thank you
Any Questions?